

## Accessories

Unpack the device. Inside the carton box you should find:

1. One XLR power cable
2. One user manual
3. One DMX cable

## Warning!

Please check carefully that whether there is any damage caused by transportation. Should there be any, please consult your dealer and don't use it.

Don't install the fixture on the flammable places.  
The fixtures do not shoot at the flammable subjects directly, the space between the fixture and subjects at least 0.5m.

Don't stare at the light in order to hurt the eyes.  
Installation the fixtures by the qualified person.  
Please confirm the voltage and the power to the fixture's one.

Please unplug the power cable when maintain, installation or need to move it.



### CAUTION!

Keep this device away from rain and moisture!

Every person involved with the installation, operation and maintenance of this device has to:



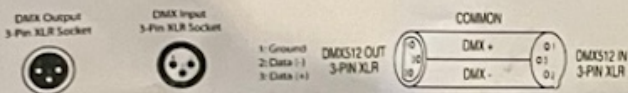
### CAUTION!

Unplug mains lead before opening the housing.

- be qualified
- follow carefully the instructions of this manual

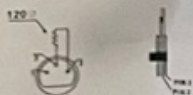
## DMX-512 control connection

Connect the provided XLR cable to the female 3-pin XLR output of your controller and the other side to the male 3-pin XLR input of the moving head. You can chain multiple Moving head together through serial linking. The cable needed should be two core, screened cable with XLR input and output connectors. Please refer to the diagram below.



## DMX-512 connection with DMX terminator

For installations where the DMX cable has to run a long distance or is in an electrically noisy environment, such as in a discotheque, it is recommended to use a DMX terminator. This helps in preventing corruption of the digital



control signal by electrical noise. The DMX terminator is simply an XLR plug with a 120 resistor connected between pins 2 and 3, which is then plugged into the output XLR socket of the last fixture in the chain. Please see illustrations below.

## TECHNICAL PARAMETERS

Input power: AC100—240V,  
50/60HZ  
Power consumption: 850W  
LED: 4pcs\*200W 2in1 warm white and cold white  
Lifetime: 100,000hours  
DMX Channel: 2/6/12channels  
Dimmer: 0-100% linear dimming, separate strobe  
Environmental temperature: -20...to40...  
Control mode: DMX512/Master-slave/Auto/Sound  
Display: LCD display  
Hanging brackets included: floor stands Net weight:  
13kg  
Dimensions: 393\*376\*210mm (L\*W\*D)(hanging bracket placed vertically)

## MENUFUNCTION

NO.	Display	Function
1	A001	6chs .001—512. Press "UP" or "DOWN" to choose the DMX ADD.
2	D001	12chs .001—512. Press "UP" or "DOWN" to choose the DMX ADD.
3	H001	2chs .001—512. Press "UP" or "DOWN" to choose the DMX ADD.
4	CC00	Movementeffects .00—10. Press "UP" or "DOWN" to choose the effects.
5	LL00	Movement speed (01—99. Press "UP" or "DOWN" to choose the speed
6	CP 00	Gradually change .01—99. Press "UP" or "DOWN" to change the speed or effects
7	dE 00	Pulse change .01—99. Press "UP" or "DOWN" to change the speed or effects
8	bEb1	Sound
9	W255	color .000—255. Press "UP" or "DOWN" to change the color
10	Y255	color 000—255. Press "UP" or "DOWN" to change the color
11	n000	Strobe .000—255. Press "UP" or "DOWN" to change the speed

## DMX address setting

With this function, you can adjust the desired DMX-address via the Control Board. Select via the encoder. Press the encoder; adjust the DMX address by turning the encoder. Press the encoder to confirm. Press the Mode/Esc-button in order return to the main menu. Set DMX address. Display the DMX 512 value of each channel. With this function you can display the DMX 512 value of each channel with a value changing. The COB BLINDER400 has 3 DMX modes, 12CH, 6CH and 2CH can receive the International DMX signal. In the DMX, you can choose [DMX] [Auto] and [Sound] [Master] and [Slave] mode.